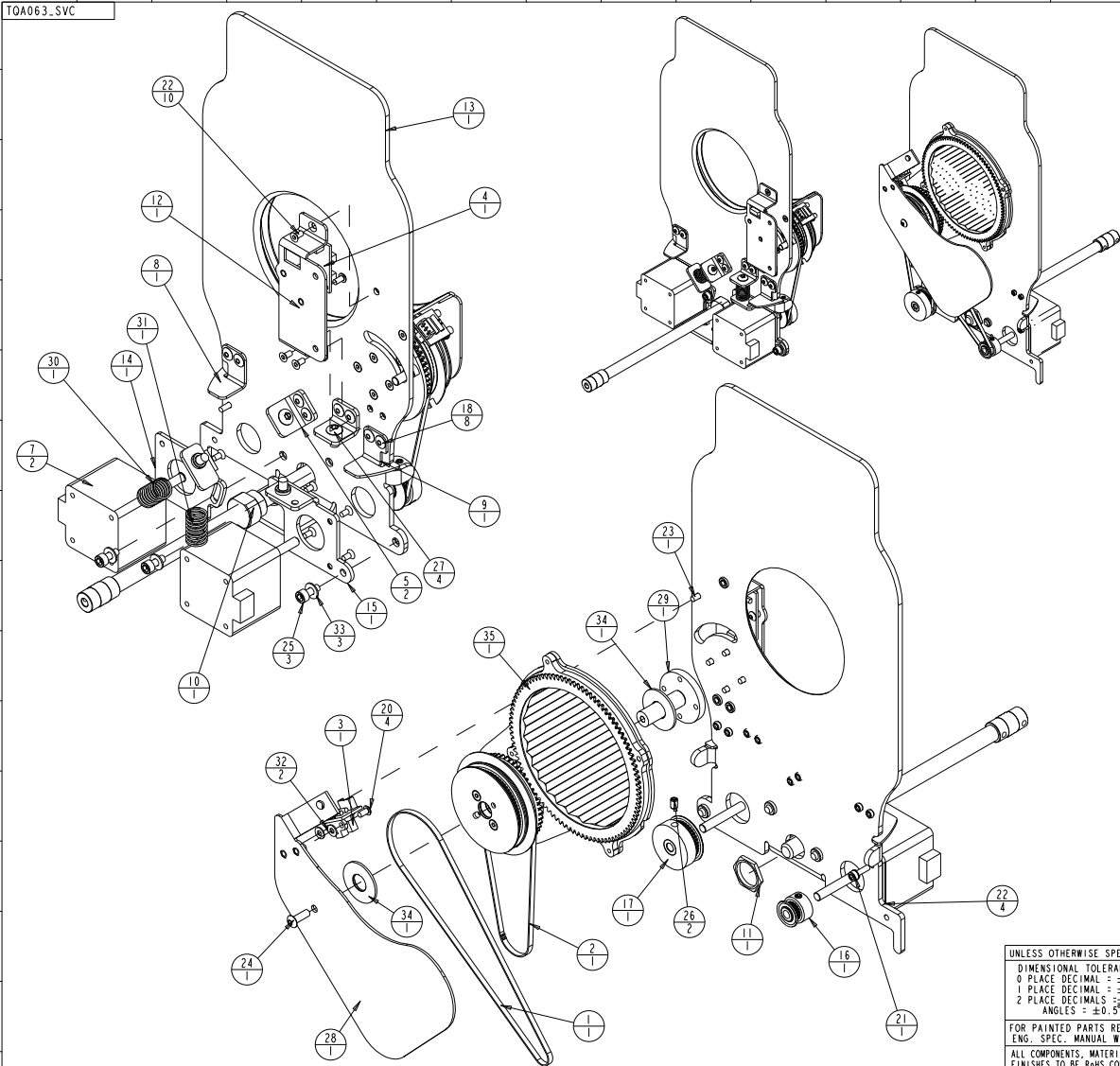


FOR SERVICE REFERENCE ONLY



ITEM NO.	QTY.	FILENAME	PART NO.	DESCRIPTION
35	1	TQA061	INTERNAL	WHEEL, ASM, FX, SINGLE GOBO, SHB
34	2	TQ374	90706208	WASHER, THRUST, 1.0 OD, .5 ID, .055 THK
33	3	WASHER8-32S	90706009	WASHER, #8 FLAT SS .174 X .375 X .032
32	2	WASHER_125X275_SZ	90706128	WASHER, M3 FLAT X MT OD ZINC
31	1	SPRING_COMP480_2000	90701395	SPRING, COMPRESSION, .480 OD, 2.0 LONG
30	1	SPRING_COMP480_1500	90701394	SPRING, COMPRESSION, .480 OD, 1.5 LONG
29	1	TQ373	99260572	SHAFT, MOUNTING, FX WHEEL
28	1	TO160	99190109	SHADE, BELT, FX WHEEL
27	4	SCREWM5AB10BZP	91010510	SCREW, M5 BUTTON 10 BZ W/PATCH
26	2	SCREWM4AS06CUP-SSP	91190406	SCREW, M4 SOCKET SET, CUP, .06 SS W/PATCH
25	3	SCREWM4AC10BZP	91050410	SCREW, M4 SOCKET CAP 10 BZ W/PATCH
24	1	SCREWM4AB12BZ	91010412	SCREW, M4 BUTTON 12 BZ W/PATCH
23	1	SCREWM3AF08BZ	91040308	SCREW, M3 SOCKET CSNK FLAT 08 BZ W/PATCH
22	14	SCREWM3AF06BZP	91040306	SCREW, M3 SOCKET CSNK FLAT 06 BZ W/PATCH
21	1	SCREWM3AC10BZ	91000310	SCREW, M3 SOCKET CAP 10 BZ SEMS
20	4	SCREWM3AB06BZP	91010306	SCREW, M3 BUTTON SOCKET HD 06 BZ W/PATCH
19	1	TO384	90721017	SCREW, LEAD, FX ZOOM
18	8	RIVET54A08	90701197	RIVET, 5/32 DOME .188 - .250 ALUMINUM
17	1	TO390	80370028	PULLEY, TIMMING, FX SPIN, 36T, MXL
16	1	RB310	80370023	PULLEY, ASSY, DRIVE, 18 TOOTH .080 PITCH
15	1	TO158	99080386	PLATE, MOTOR MOUNT, FX WHEEL, RIGHT
14	1	TO157	99080385	PLATE, MOTOR MOUNT, FX WHEEL, LEFT
13	1	TO155	99080382	PLATE, EFFECTS, SINGLE GOBO
12	1	TO159	99080378	PLATE, SENSOR MOUNT, FX WHEEL, PIVOT
11	1	NUT58-24LPS	90703053	NUT, PANEL MOUNT 5/8-24 X 3/32 BRASS
10	1	TO372	90703111	NUT, LEAD SCREW, 3/8 X 1.00 S5 START
9	1	TO162	99260576	MOUNT, ROLLER, FX WHEEL, RIGHT
8	1	TO181	99260577	MOUNT, ROLLER, FX WHEEL, LEFT
7	2	MR108_03	99270077	MOTOR, STEP 2PH MET S17 33.8mm ALNICO NMB
6	1	SP191	90701149	COUPLER, SLIM-LINE .88 VIBRATION CONTROL
5	2	TO163	99260578	BRACKET, MOTOR TENSION, FX
4	1	TB090	80040019EF	BOARD, SENSOR ASSY TECHNOBEAM
3	1	FS709	80040022EF	BOARD, ASSY X-SPOT FLAG HOMING SENSOR
2	1	TO505	99360054	BELT, MXL, 145 TOOTH, 1/8 WIDE, HI TEMP
1	1	TO509	99360062	BELT, FX WHEEL PIVOT, 180T

UNLESS OTHERWISE SPECIFIED: RELEASE DATE: CE: HIGH END 2105 GRACY FARMS LANE AUSTIN, TEXAS 78758 (512) 836-2242 FAX (512) 832-4128 http://www.highend.com

W/IN. DRAFT MIN. DRAFT MIN. RADI: FLATNESS THICKNESS VOLUME

FOR PAINTED PARTS REFER TO ENG. SPEC. MANUAL WI-0582 ALL COMPONENTS, MATERIALS AND FINISHES TO BE R6HS COMPLIANT

RELEASE DATE: CE: OA: DRW: DESCRIPTION: BULKHEAD, ASM, FX, SINGLE GOBO, SHB MATERIAL: CHARTED FINISH: NA

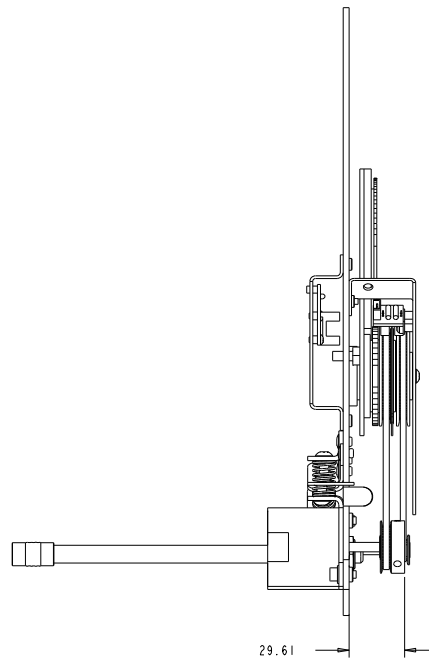
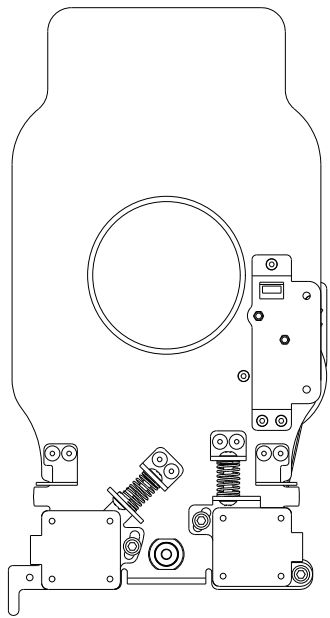
INTERPRET DIMENSIONS PER ASME Y14.5M-1994 THIRD ANGLE PROJECTION DIMENSIONS ARE IN MILLIMETERS

SI METRIC A1 PART NO. INTERNAL TQA063_SVC DRAWING NO. REV.

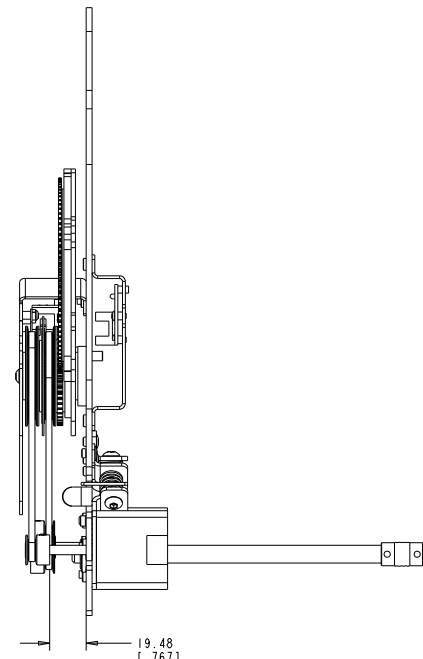
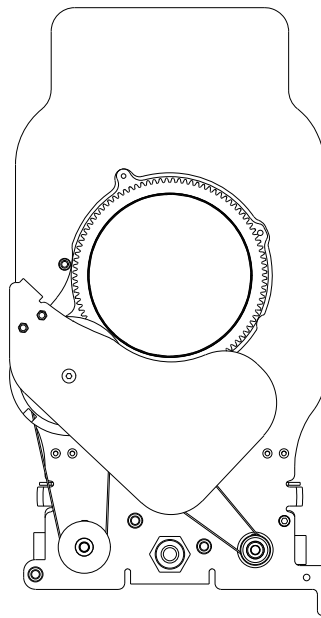
DO NOT SCALE SCALE: 0.800 SHEET: 1 OF 2

PROPRIETARY NOTICE:
 THIS DOCUMENT CONTAINS CONFIDENTIAL AND PROPRIETARY INFORMATION OF HIGH END SYSTEMS INC., (ALSO DBA LIGHTWAVE RESEARCH) AND IS GIVEN TO THE RECEIVER IN CONFIDENCE. THE RECEIVER ACCEPTS AND AGREES THAT, EXCEPT AS AUTHORIZED BY HIGH END SYSTEMS, THE RECEIVER WILL NOT PERMIT THE USE OF THE DOCUMENT OR ANY COPY THEREOF OR THE INFORMATION THEREIN, WILL NOT COPY OR PERMIT COPYING THE DOCUMENT OR DISCLOSE TO OTHERS EITHER THE DOCUMENT OR THE INFORMATION THEREIN, AND WILL UPON COMPLETION OF THE NEED TO RETAIN THE DOCUMENT, OR UPON DEMAND, RETURN THE DOCUMENT WITHOUT RETAINING ANY OF THE INFORMATION CONTAINED THEREIN IN ANY FORM WHATSOEVER.

FOR SERVICE
REFERENCE ONLY



29.61
[1.166]
(GOBO SPIN PULLY)



19.48
[.767]
(GOBO PIVOT PULLY)

PROPRIETARY NOTICE:
THIS DOCUMENT CONTAINS CONFIDENTIAL AND PROPRIETARY INFORMATION OF HIGH END SYSTEMS INC., (ALSO DBA LIGHTWAVE RESEARCH) AND IS GIVEN TO THE RECEIVER IN CONFIDENCE. THE RECEIVER ACCEPTS AND AGREES THAT, EXCEPT AS AUTHORIZED BY HIGH END SYSTEMS, THE RECEIVER WILL NOT PERMIT THE USE OF THE DOCUMENT OR ANY COPY THEREOF OR THE INFORMATION THEREIN, WILL NOT COPY OR PERMIT COPYING THE DOCUMENT OR THE INFORMATION THEREIN, AND WILL UPON COMPLETION OF THE NEED TO RETAIN THE DOCUMENT, OR UPON DEMAND, RETURN THE DOCUMENT WITHOUT RETAINING ANY OF THE INFORMATION CONTAINED THEREIN IN ANY FORM WHATSOEVER.

UNLESS OTHERWISE SPECIFIED	RELEASE DATE:	CE:	High End	2105 GRACY FARMS LANE AUSTIN, TEXAS 78758	
DIMENSIONAL TOLERANCES: 0 PLACE DECIMAL = ±0.38 1 PLACE DECIMAL = ±0.25 2 PLACE DECIMALS = ±0.13 ANGLES = ±0.5°	ENG:	OA:		(512) 836-2242 FAX (512) 832-4128 http://www.highend.com	
FOR PAINTED PARTS REFER TO ENG. SPEC. MANUAL WI-0592	MATERIAL:	DRW:	DESCRIPTION: BULKHEAD, ASM, FX, SINGLE GOBO, SHB		
ALL COMPONENTS, MATERIALS AND FINISHES TO BE RSHS COMPLIANT	FINISH:	FINISH: NA			
MIN. DRAFT	INTERPRET DIMENSIONS PER ASME Y14.5M-1994 THIRD ANGLE PROJECTION DIMENSIONS ARE IN MILLIMETERS	SI METRIC A1	PART NO. INTERNAL	DRAWING NO. TQA063_SVC	REV.
MIN. RADI	DO NOT SCALE	SCALE: 0.800	SHEET: 2 OF 2		
FLATNESS					
THICKNESS					
VOLUME					